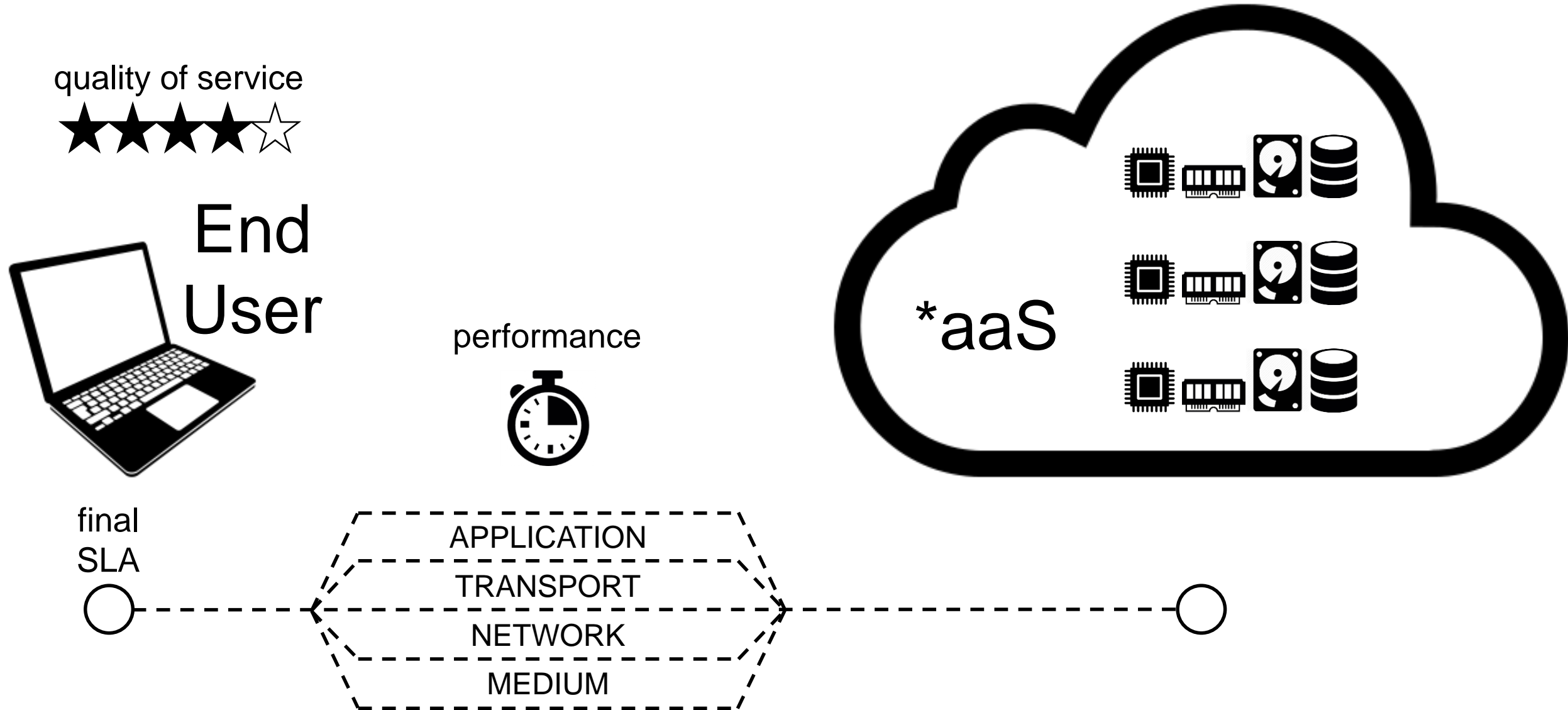
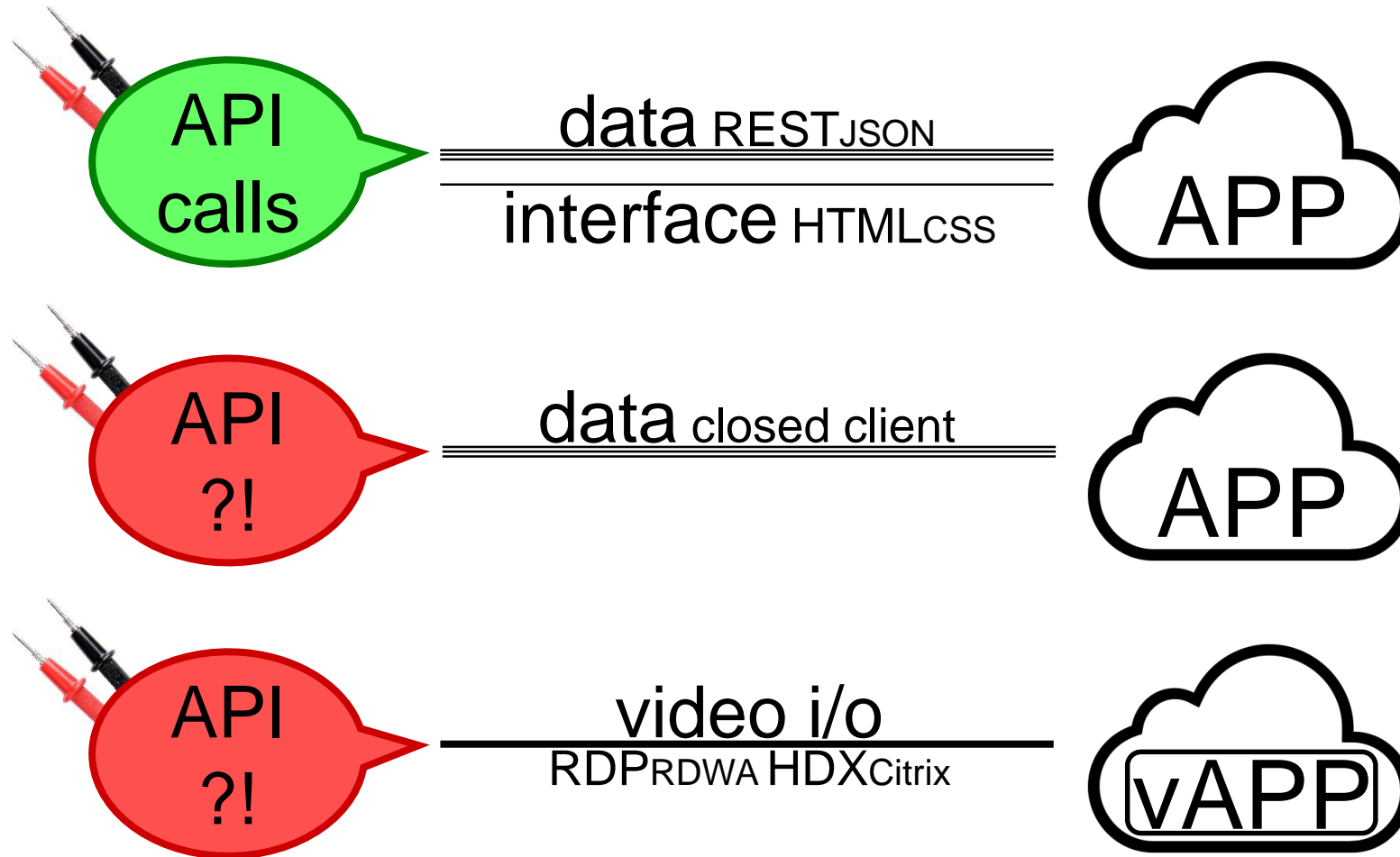
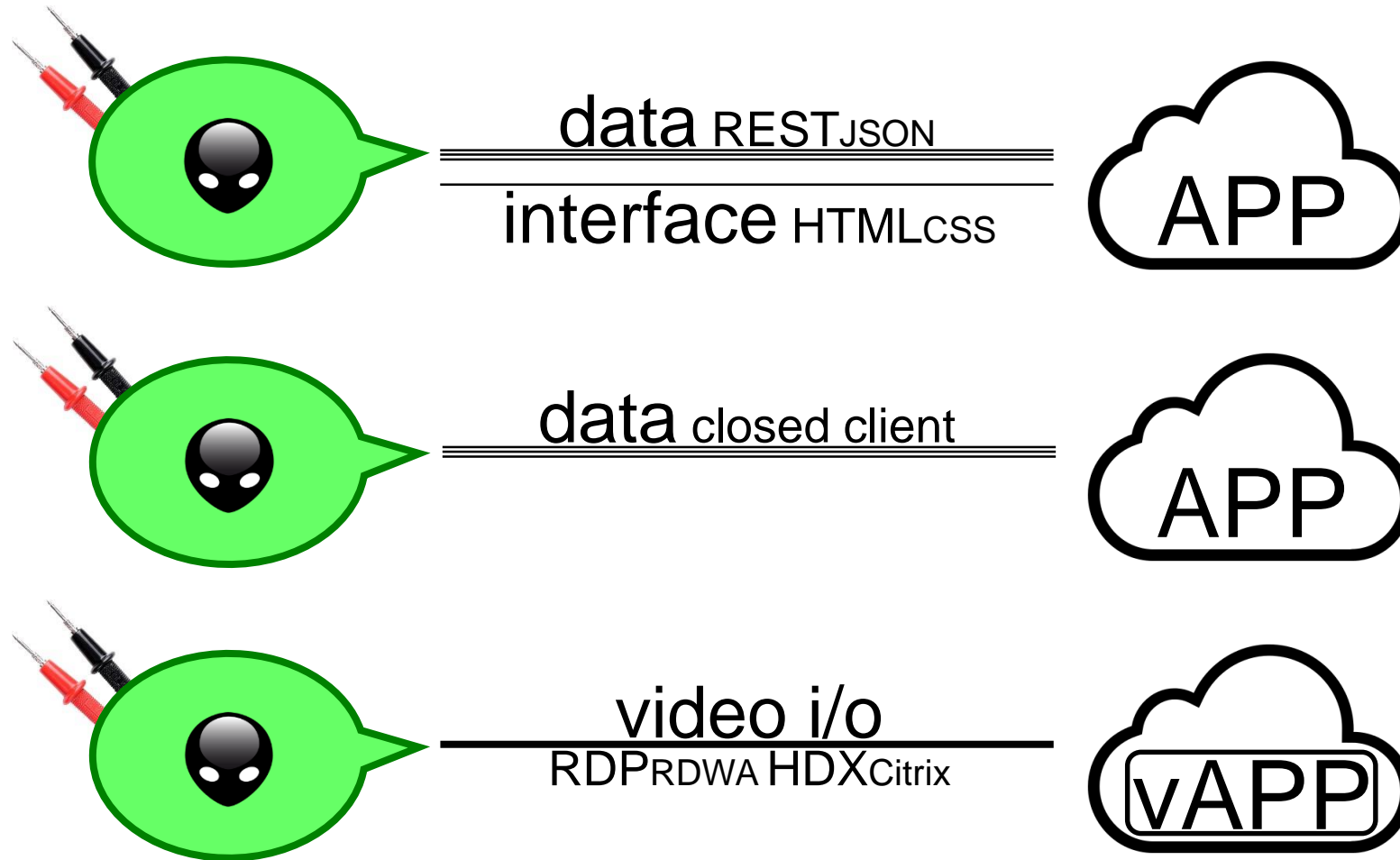


Francesco Melchiori
Product manager
Würth Phoenix









What is alyvix?

Visual Synthetic Monitoring

Visual

Alyvix looks at **graphic interfaces**

Synthetic

Alyvix behaves like **human users**

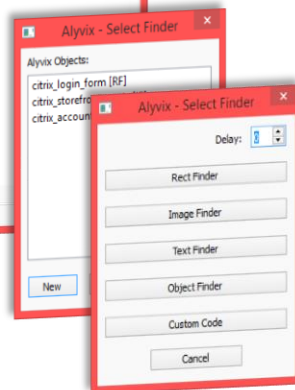
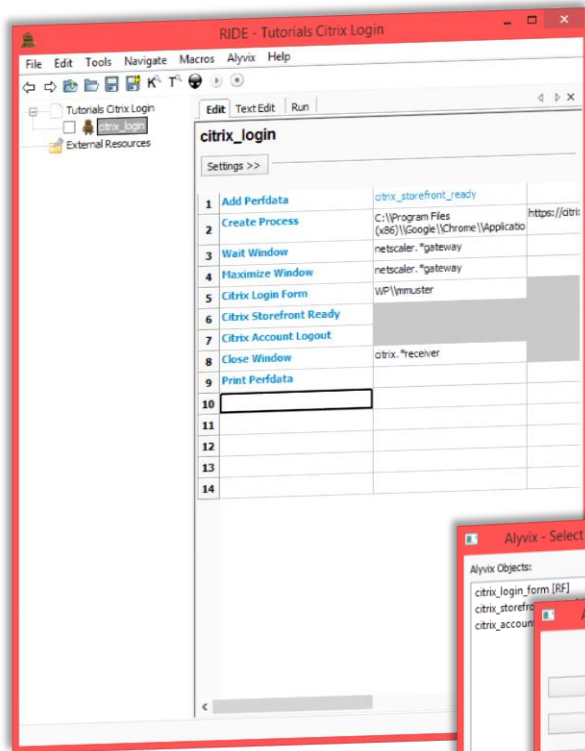
Monitoring

Alyvix tracks **transaction performances**

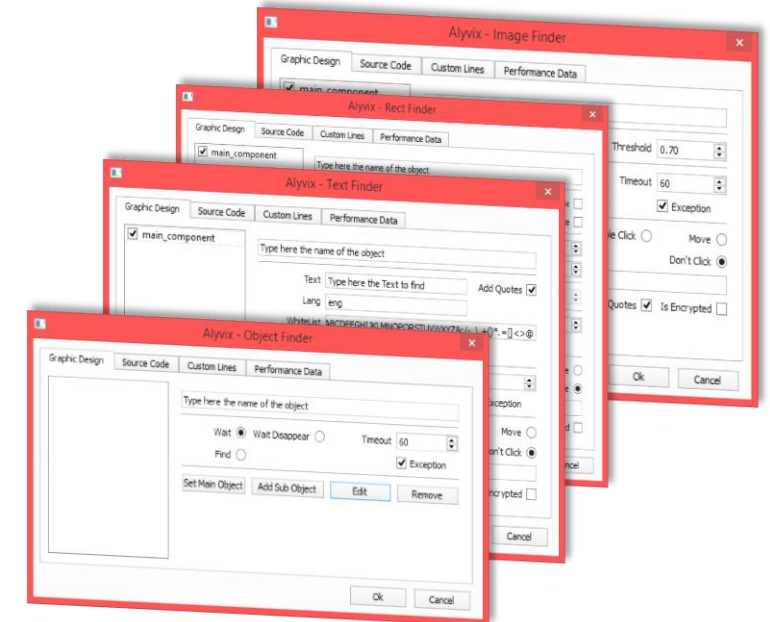
Alyvix **automates** any application

interacting with GUIs exactly as a human would do

Alyvix provides GUI tools to **design** any app **transactions**



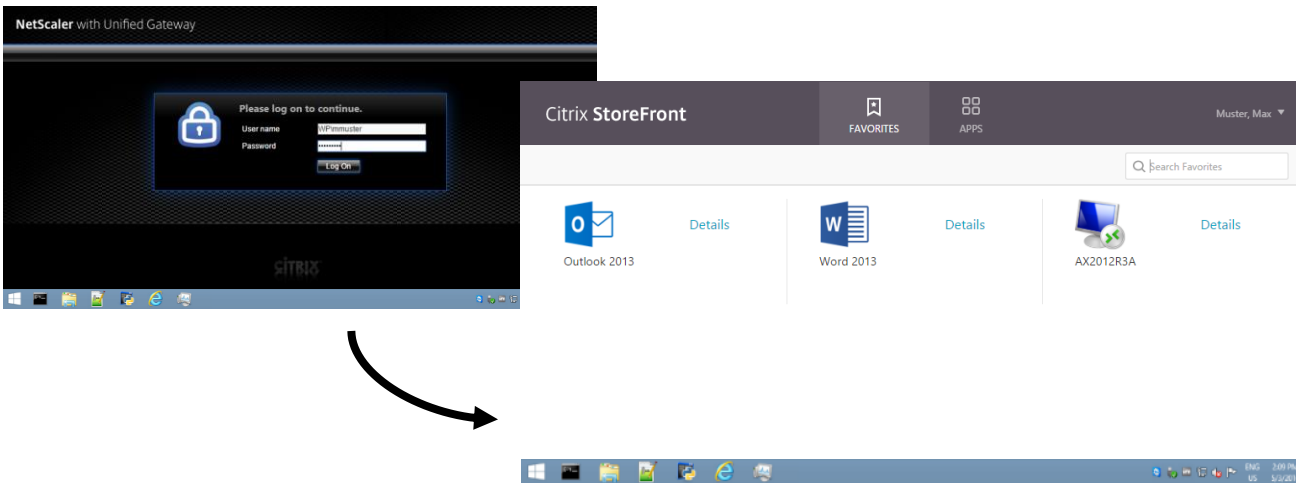
Python
OpenCV
TesseractOCR
RobotFramework



1 transaction

1 Alyvix keyword

citrix_storefront_ready



1. Define a unique application **graphics** in a keyword
2. Plan **interactions** on an application state in a keyword
3. Measure the **time** that a keyword takes to appear

Alyvix Image Finder keyword

detects and interacts with
image components



WÜRTHPHOENIX
NetEye

Citrix StoreFront

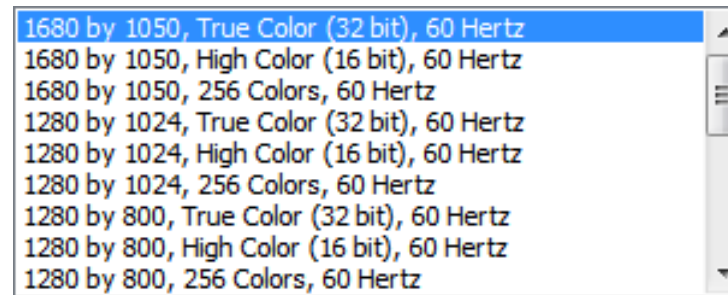
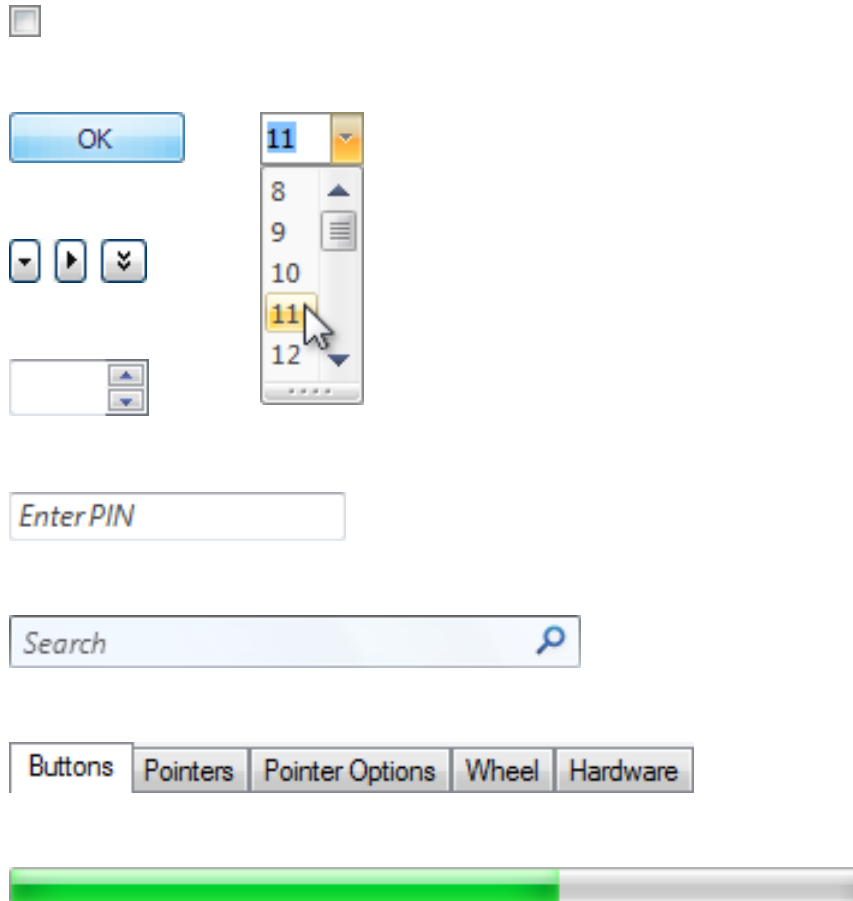
Start Tour

TRENTINO



Alyvix Rect Finder keyword

detects and interacts with
rectangle components



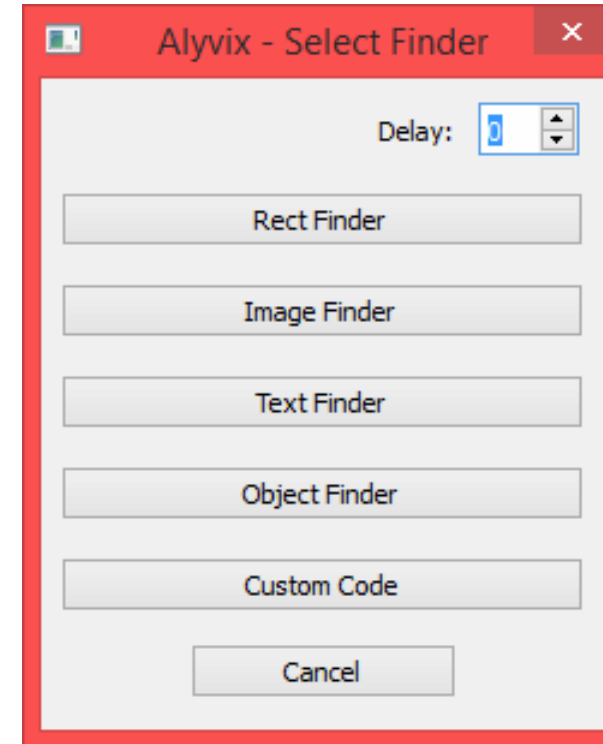
Alyvix Text Finder keyword

detects and interacts with text string components

File																Home		Share		View							
Copy		Paste	Cut		Move to	Copy to	Delete	Rename	New folder	New item		Properties	Open		Select all		Select none	Invert selection									
			Copy path							Easy access			Edit		Select none												
			Paste shortcut										History														
			Clipboard				Organize			New			Open					Select									
This PC																Windows (C:)		projects		_alyvix		documents				Search do...	
Favorites					Name										Date modified			Type									
_wuerthphoenix					_alyvix_01_web_development										2016-09-21 4:31 PM			File folder									
_alyvix_docs					_alyvix_02a_documentation										2016-09-28 1:52 PM			File folder									
_alyvix					_alyvix_02b_training										2016-09-22 10:45 ...			File folder									
_projects					_alyvix_03_keynotes										2016-10-06 5:17 PM			File folder									
Anaconda2					_alyvix_04a_marketing										2016-09-26 5:19 PM			File folder									
neteye.wp.lan					_alyvix_04b_conferences										2016-09-29 12:20 ...			File folder									
Marketing					_alyvix_05_business										2016-09-13 12:07 ...			File folder									
SharePoint					alyvix_00										2016-08-02 3:42 PM			File folder									
Dropbox					alyvix_commissioning_expense_reports										2016-06-20 10:54 ...			File folder									
Downloads					alyvix_competitors										2016-07-18 1:54 PM			File folder									
software					alyvix_customers										2016-02-22 11:26 ...			File folder									
Recycle Bin					alyvix_dropbox_20160215										2016-02-15 8:06 A...			File folder									
Desktop					alyvix_emails_201601										2016-02-02 10:45 ...			File folder									
Recent places					alyvix_pictures										2016-09-30 9:33 A...			File folder									
					manuals										2016-04-28 6:16 PM			File folder									
This PC					slide.psd										2016-04-27 3:42 PM			Adobe Ph									
Desktop					slide_white.psd										2016-05-05 2:49 PM			Adobe Ph									
Documents					alyvix_excel_finder_tests_201606.xlsx										2016-08-08 4:24 PM			Microsoft									
Downloads					alyvix_excel_finder_tests_201607.xlsx										2016-07-15 11:24 ...			Microsoft									
Music					alyvix_test_divina_commedia.doc										2016-06-14 6:24 PM			Microsoft									
Pictures					alyvix_test_divina_commedia_full.doc										2016-06-08 4:16 PM			Microsoft									
Videos					_01_alyvix_product_management_201602.txt										2016-10-05 1:47 PM			TXT File									
					_01b_alyvix_logging_hours.txt										2016-10-05 11:12 ...			TXT File									
Windows (C:)					_02_alyvix_software_development_201602.txt										2016-10-03 3:59 PM			TXT File									
pb00222 (\\wp.lan\home\					_02b_alyvix_alan_week_plan_20160314.txt										2016-10-05 4:46 PM			TXT File									
install (\\wp.lan\data) (l:					_03_alyvix_web_development_201602.txt										2016-09-19 3:14 PM			TXT File									
SystemIntegration (\\wp.l					03b_alyvix_website_home_201603.txt										2016-07-21 12:03 ...			TXT File									
Network																											
33 items 1 item selected 579 bytes																											

Transaction definition in an **Alyvix** keyword

1. Select an Alyvix Finder type



Transaction definition in an **Alyvix** keyword

1. Select an Alyvix Finder type
2. Select graphic components



Transaction definition in an **Alyvix** keyword

1. Select an Alyvix Finder type
2. Select graphic components
3. Type keyword name

citrix_login_form

Transaction definition in an **Alyvix** keyword

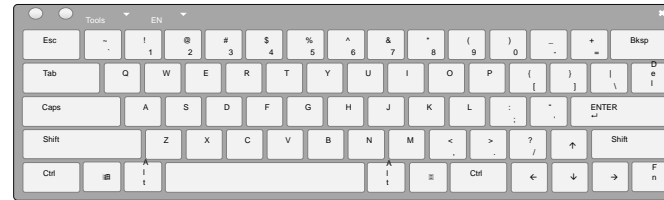
1. Select an Alyvix Finder type
2. Select graphic components
3. Type keyword name
4. Set recognition settings



- IF similarity threshold
- RF size thresholds
- TF regular expression

Transaction definition in an **Alyvix keyword**

1. Select an Alyvix Finder type
 2. Select graphic components
 3. Type keyword name
 4. Set recognition settings
 5. Set interaction modes
- Hovering
 - Single or double left clicking
 - Single right clicking
 - Text string typing
 - Shortcut pressing



keyboard
inputs



mouse
inputs

Transaction definition in an **Alyvix keyword**

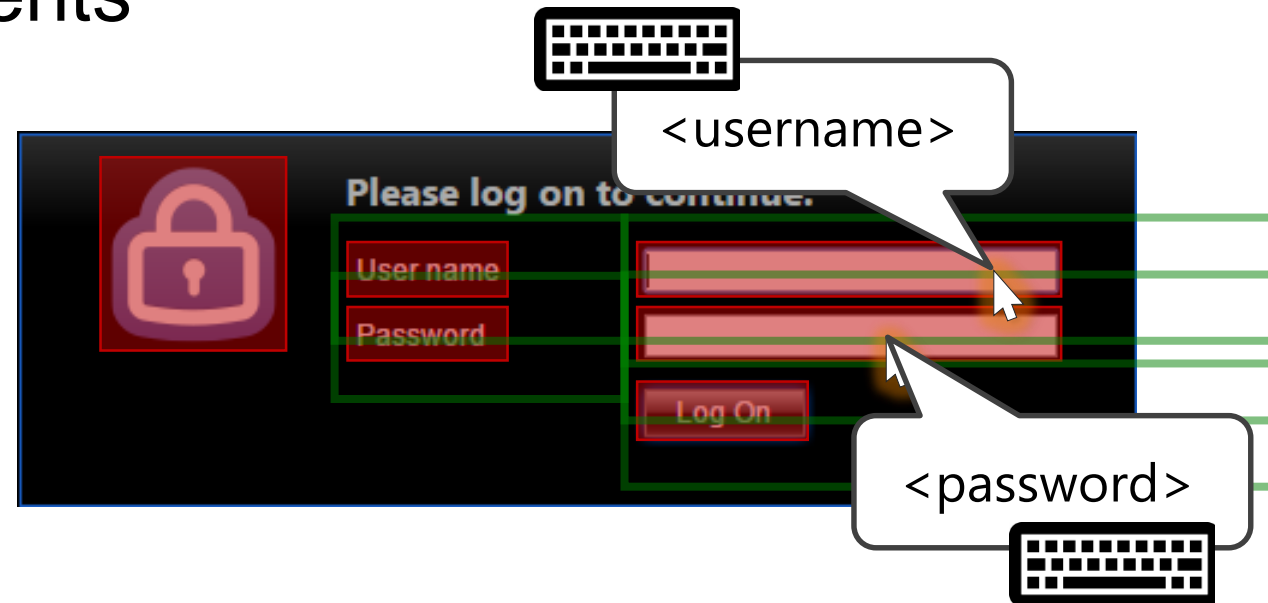
1. Select an Alyvix Finder type
2. Select graphic components
3. Type keyword name
4. Set recognition settings
5. Set interaction modes
6. Set performance settings

- ON/OFF measurement toggle
- Warning and critical thresholds
- Timeout limit

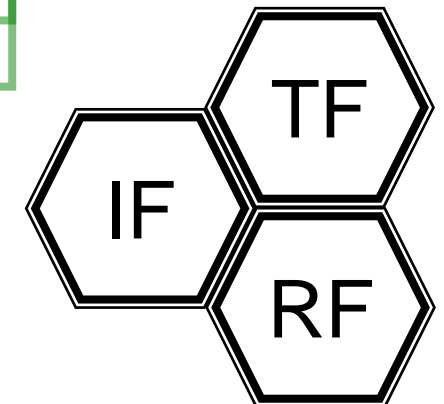


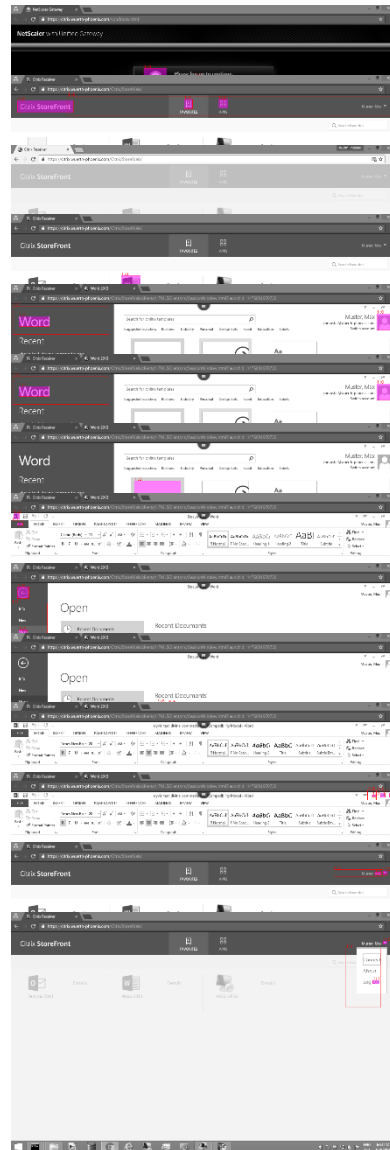
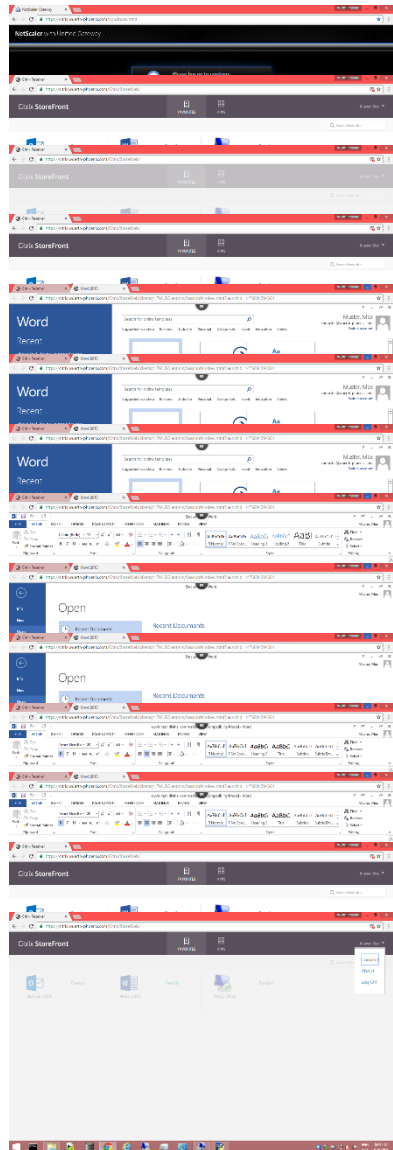
Alyvix **Object Finder** keyword

detects and interacts with
multitype components



- ◆ IF similarity threshold
- ◆ RF size thresholds
- ◆ TF regular expression
- ◆ IF↔RF↔TF regions of interest





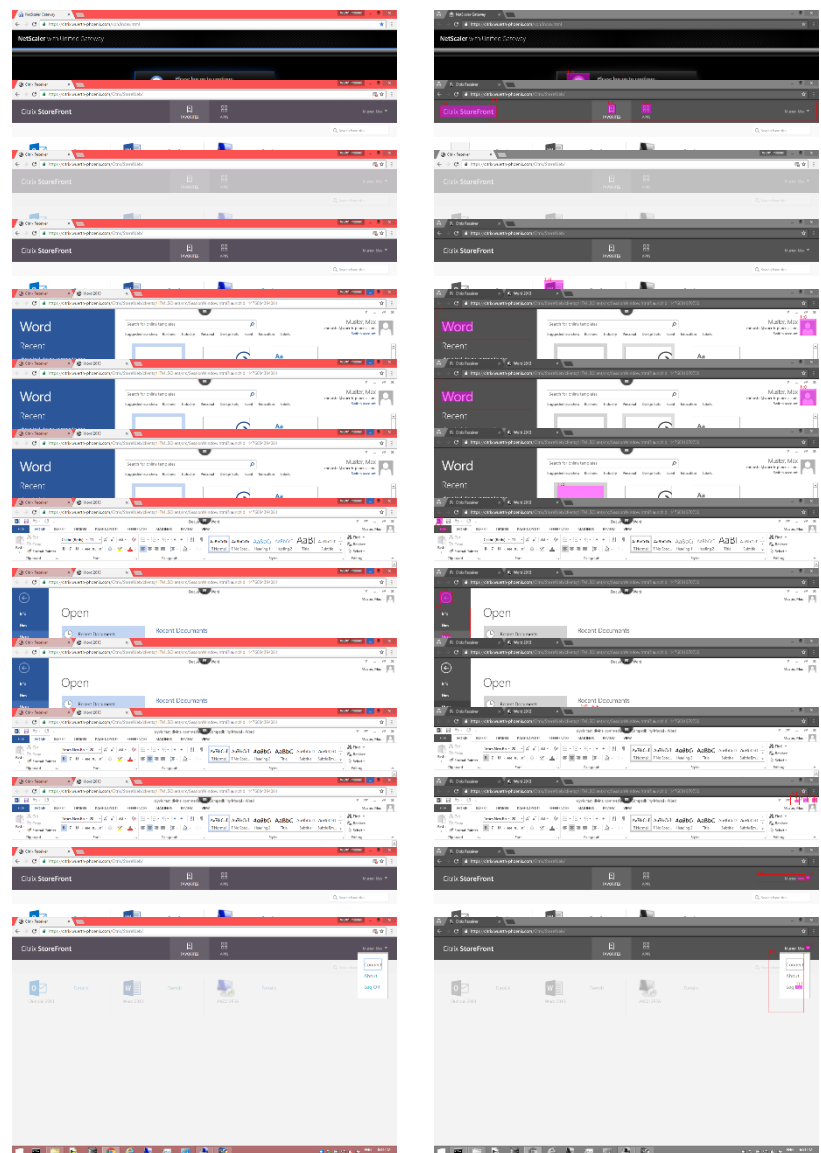
End user interaction flow



List of transactions



Test case



RIDE - Wp Citrix Word

File Edit Tools Navigate Macros Alyvix Help

Wp Citrix Word

- wp_citrix_word
- setup
- exit
- External Resources

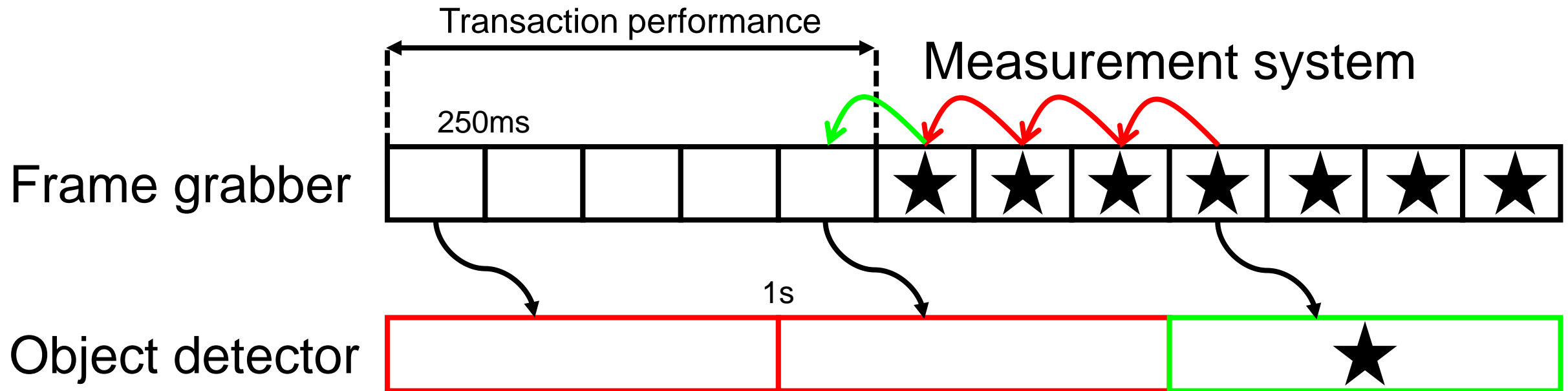
wp_citrix_word

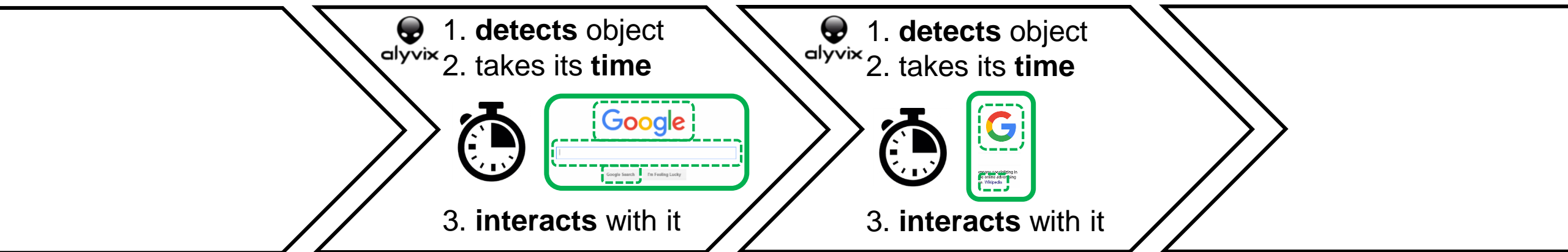
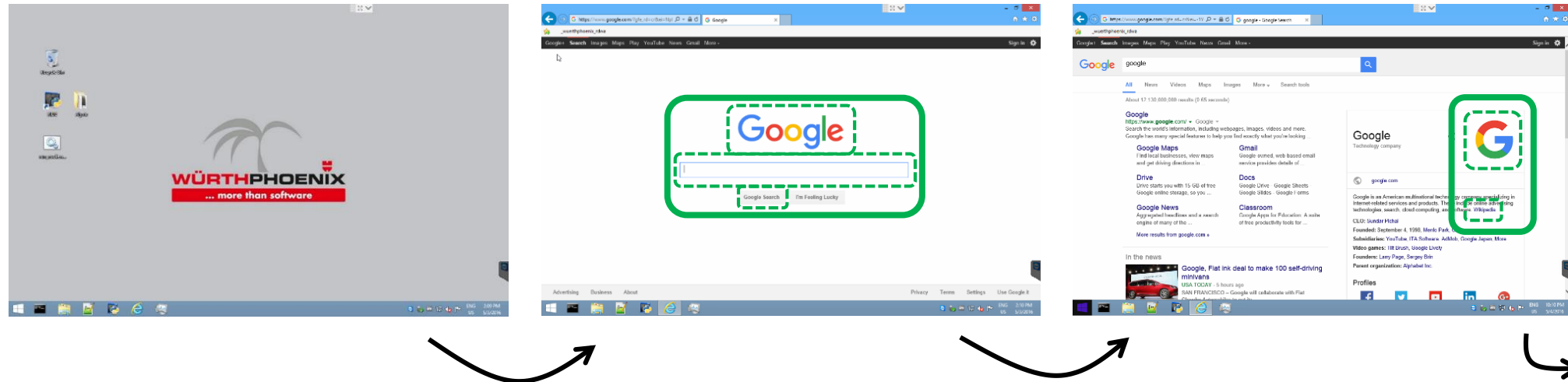
Settings >>

1	Citrix Login	WP\mmuster
2	Citrix Ready	
3	Citrix Reconnect	
4	Citrix Run Word	
5	Word Ready	
6	Word Getting Started	
7	Word Blank Doc	
8	Word File	file
9	Word Open	open
10	Word Open Doc File	alyvix_test_divina_commedia.doc
11	Word Open Ready	100
12	Word Exit	
13	Citrix Account	. *muster. *max. *
14	Citrix Logoff	

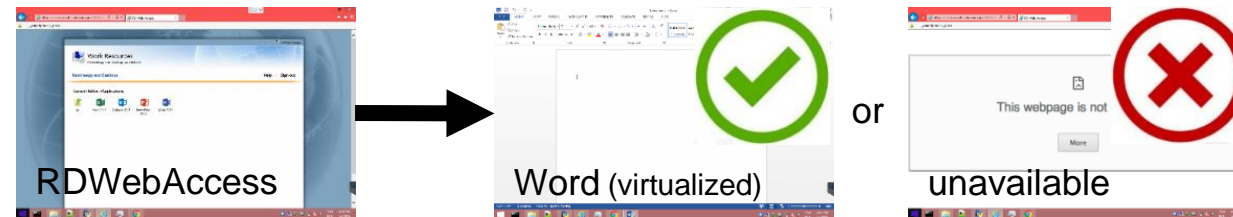
Alyvix **measures** app transactions

defined and then listed in test cases

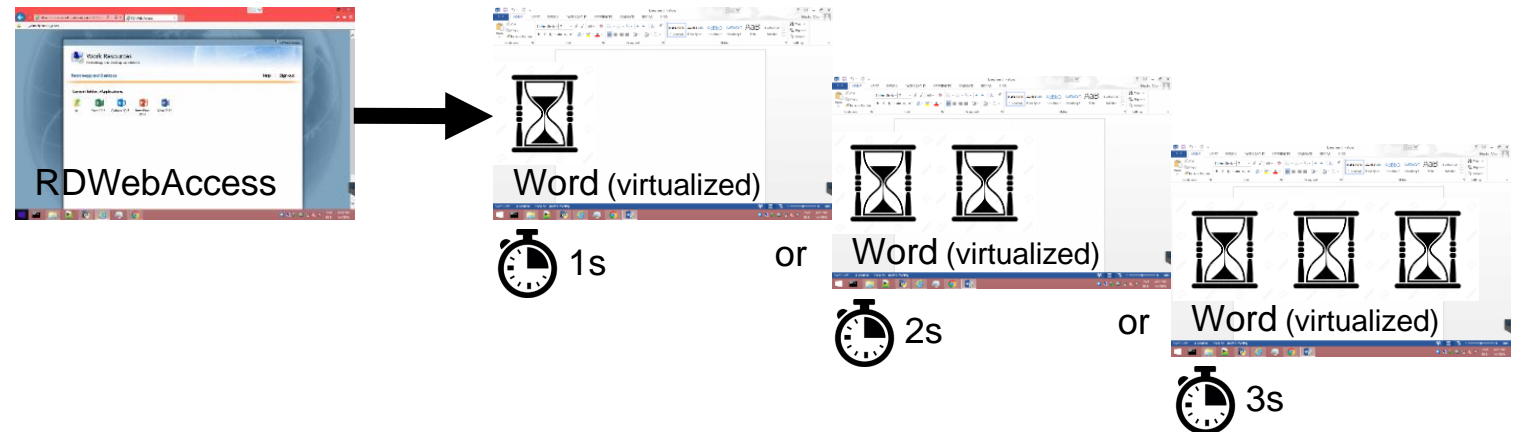




1.Check AVAILABILITY



2. Measure RESPONIVENESS



Alyvix reports test case transactions

in HTML pages

```
run_wp_citrix_word

C:\alyvix_scripts>c:

C:\alyvix_scripts>call alyvix_pybot.bat C:\Anaconda2\Lib\site-packages\alyvix\ro
botproxy\alyvix_testcases\wp_citrix_word.robot --outputdir C:\alyvix_reports\wp_
citrix_word
OK: all steps are ok!citrix_login=1.83899998665s;5.0;7.5;; citrix_ready=1.266999
95995s;20.0;25.0;; word_ready=9.56299996376s;50.0;70.0;; word_open_ready=6.97699
999809s;400.0;500.0;;
OK: citrix_login time is 1.83899998665 sec.
OK: citrix_ready time is 1.26699995995 sec.
OK: word_ready time is 9.56299996376 sec.
OK: word_open_ready time is 6.9769999809 sec.
Press any key to continue . . .
```

C:\>alvix_scr

C:\>alvix_scr

botproxy\alvix

citrix_word

OK: all steps

95995s;20.0;25

999809s;400.0;

OK: citrix_log

OK: citrix_read

OK: word_ready

OK: word_open

Press any key

Wp Rdp Ax2012 Test Log
Würth Phoenix

file:///C:/alvix_reports/wp_rdp_ax2012/log.html#s1

REPORT

Test Execution Log

SUITE Wp Rdp Ax2012
00:05:15.204

Full Name: Wp Rdp Ax2012

Source: [C:\alvix_testcases\wp_rdp_ax2012.robot](#)

Start / End / Elapsed: 20160822 15:27:58.008 / 20160822 15:33:13.212 / 00:05:15.204

Status: 1 critical test, 1 passed, 0 failed
1 test total, 1 passed, 0 failed

+ SETUP setup 00:00:00.000
 + TEARDOWN exit 00:00:00.000

TEST wp_rdp_ax2012
00:05:14.610

Full Name: Wp Rdp Ax2012.wp_rdp_ax2012

Start / End / Elapsed: 20160822 15:27:58.602 / 20160822 15:33:13.212 / 00:05:14.610

Status: PASS (critical)

- + KEYWORD alvixib.Alyvix Config C:\alvix_logbooks\config.xml 00:00:00.000
- + KEYWORD alvixib.Maximize Window 10.62.5.151 00:00:00.313
- + KEYWORD AlyvixProxywp_rdp_ax2012.Ax12 Run 00:00:07.125
- + KEYWORD AlyvixProxywp_rdp_ax2012.Ax12 Ready 00:00:15.265
- + KEYWORD AlyvixProxywp_rdp_ax2012.Ax12 Section Open 00:00:09.250
- + KEYWORD AlyvixProxywp_rdp_ax2012.Ax12 Section Selection Accounts receivable 00:00:08.157
- + KEYWORD AlyvixProxywp_rdp_ax2012.Ax12 All Customers Open 00:00:09.156
- + KEYWORD AlyvixProxywp_rdp_ax2012.Ax12 Accrec Ready 00:00:04.859
- + KEYWORD AlyvixProxywp_rdp_ax2012.Ax12 Accrec Customer Selection contoso.*europe 00:00:08.578
- + KEYWORD AlyvixProxywp_rdp_ax2012.Ax12 Accrec Customer Ready 00:00:04.828
- + KEYWORD AlyvixProxywp_rdp_ax2012.Ax12 Accrec Customer Detail Close general 00:00:06.657
- + KEYWORD AlyvixProxywp_rdp_ax2012.Ax12 Accrec Customer Detail address 00:00:10.062
- + KEYWORD AlyvixProxywp_rdp_ax2012.Ax12 Accrec Customer Detail Add address 00:00:10.735
- + KEYWORD AlyvixProxywp_rdp_ax2012.Ax12 Accrec Customer Address Form Wuerth Phoenix S.r.l., ITA, 39100, Via Kravogl, 4, Bolzano 00:00:29.828
- + KEYWORD AlyvixProxywp_rdp_ax2012.Ax12 Accrec Customer Detail Close address 00:00:06.750
- + KEYWORD AlyvixProxywp_rdp_ax2012.Ax12 Accrec Customer Detail con.*ac.* 00:00:10.125
- + KEYWORD alvixib.Mouse Move 0, 0 00:00:00.156
- + KEYWORD AlyvixProxywp_rdp_ax2012.Ax12 Accrec Customer Detail Close con.*ac.* 00:00:06.953

© Würth Phoenix 2016

... more than software

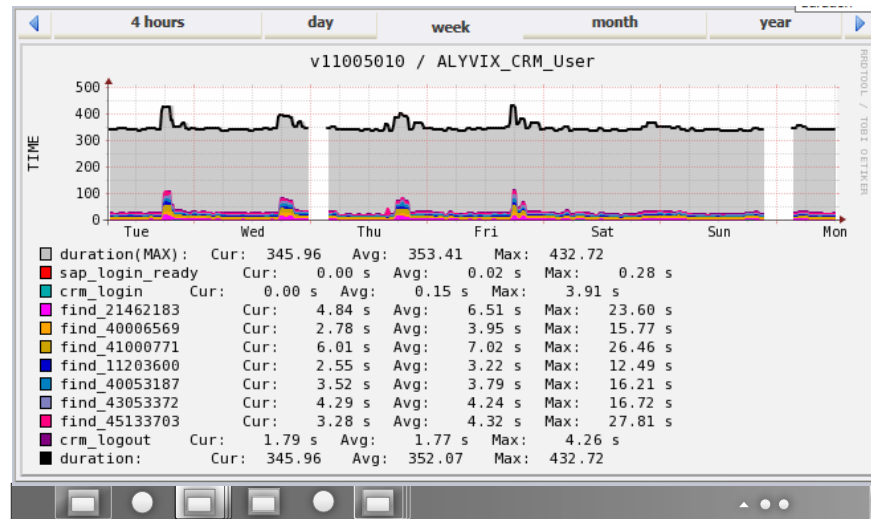
29

[illegible]

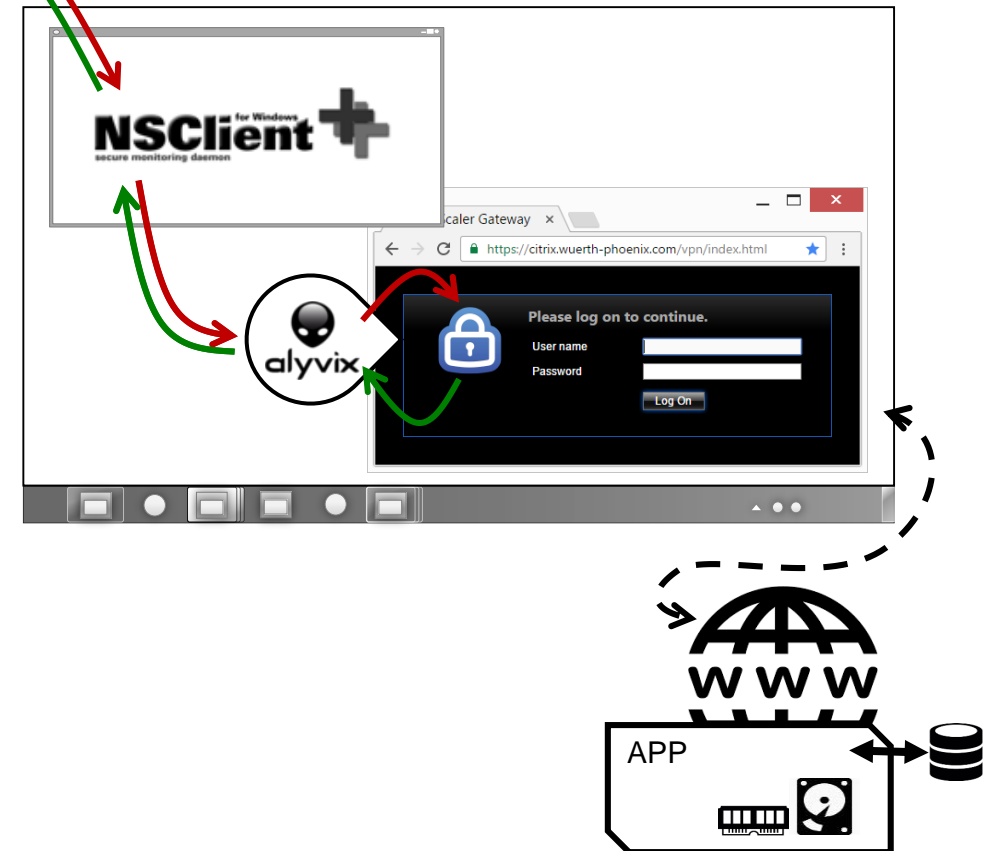
Alyvix **visualizes** test case performances

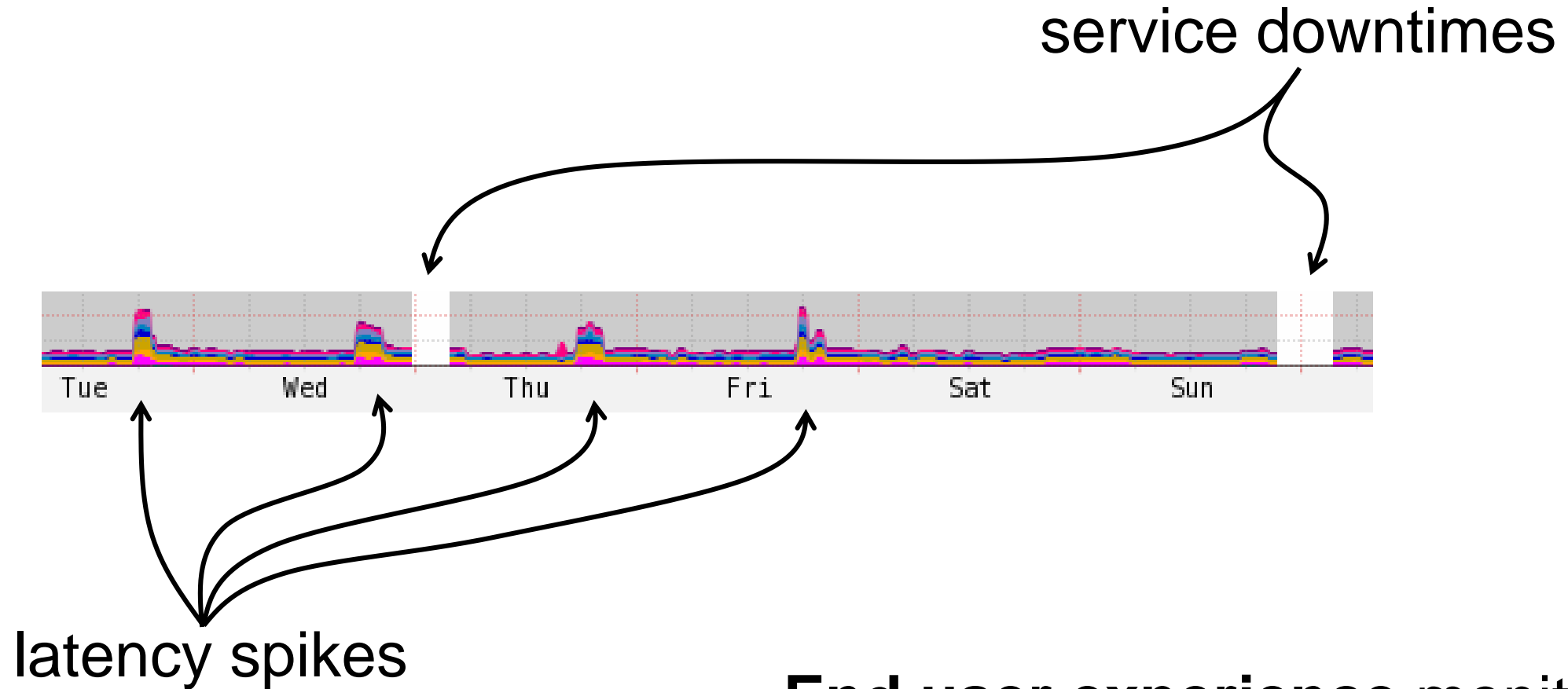
tracking them thanks to **NetEye**

NetEye server



Alyvix probe





End user experience monitoring
of business-critical transactions through
applications in the **cloud** or **on-premises**

Alyvix 2.3 Carnera | RELEASED: browse alyvix.com!



- Store performances in a local **SQLite** database
- Publish performances in **Windows Performance Monitor**
- **'Wait disappearance'** as a detection mode for Finders
- **Customizable frequencies** of frame grabber, object detector, interaction
- **UX, reports** and NetEye **integration improvements**

alyvix 2.4 under dev | February 2017



- **Interaction Selection, Hold'n'Release, Multiple Clicks, customizable exit code**
- **Report improvements:** keyword multiple use, Interaction Selection points, Object Finder .gif
- Performance **measurement** system **improvements** for 'Wait' and 'Wait disappear' modes
- **UX** and NetEye **integration improvements**
- ***Background Mode*** for lock and multiple sessions: *working in progress!*

**Alyvix certifies the ongoing
quality of IT services**

IT operations can **modulate**
infrastructure **resources**

IT clients can **check**
their **SLA** with providers

getting started
alyvix.com

contribute
github.com/alyvix/alyvix



Eyes and hands like a human.
With a stopwatch.

Thanks for your attention



alyvix.com

github.com/alyvix/alyvix