



Collabora Productivity

BACK TO THE FUTURE

Typographic quality WYSIWYG collaborative document editing and form filling in the cloud

László Németh



Collabora Productivity

@CollaboraOffice

www.CollaboraOffice.com

Special hyphenation (Introduction)

- We need only a few new hyphenation patterns to handle Dutch, Norwegian and Swedish hyphenation better

	A	B	C	D	E	F	G	H	I	J	K	L	M
1	already supported in Calc					now fixed in Calc and in shapes					not supported in Calc		
2	Old German		se	no		ca	nl	nl	hu		el	hu	nl
3	Druk-ker	Schiff-fahrt	till-låta	buss-sjåfør		paral-lel	oma-tje	café-tje	asszony-nyal asz-szonnyal		Ma-ïou	bridds-dzsel	re-ëel
4		good in Writer and Calc											
5		need only hyphenation dictionary development											
6		good in Writer, need code development for Calc											
7		need code development for Calc and Writer											
8													

paral-lel

asz-szony-nyal

„Future” for office suites

- WYSIWYG (What you see is what you get)
- Collaborative real-time editing
- “The mother of all demos”, presented by Douglas Engelbart et al. In 1968:
<https://www.youtube.com/watch?v=yJDv-zdHzMY>



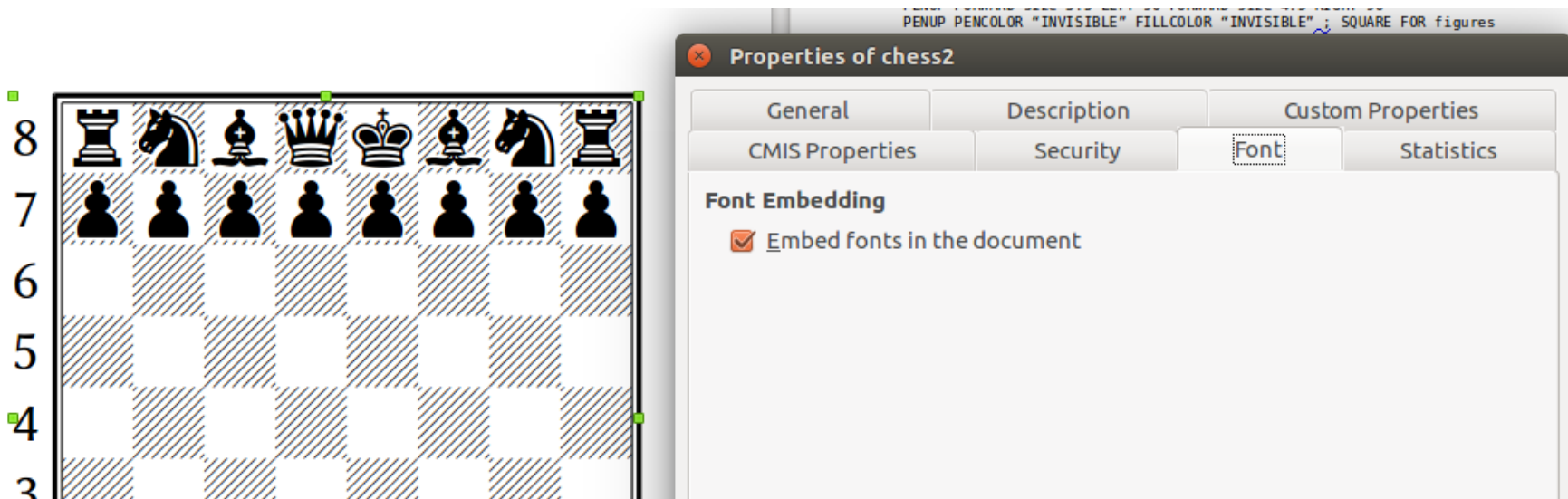
CloudSuite

- Based on LibreOffice Online
- For open and private clouds
- WYSIWYG collaborative document editing also on weak clients and limited networks
- CODE demo (OwnCloud integration):
<https://www.collaboraoffice.com/code/>



CASE STUDY: Fidelity

- Typesetting chess in printing quality
- Embedded font: Chess Merida Unicode
- Document: LibreLogo example from LibreOffice Template site



CloudSuite: embedded font support

chess3.odt - Collabo... x

ec2-54-216-97-44.eu-west-1.compute.amazonaws.com/owncloud/index.php/apps/richdocun

helyesírás változások pdf

Collabora Online Development Edition

CODE
Collabora Online
Development Edition

Fájl

Stílus Chess Merida Unico... 50

B I U

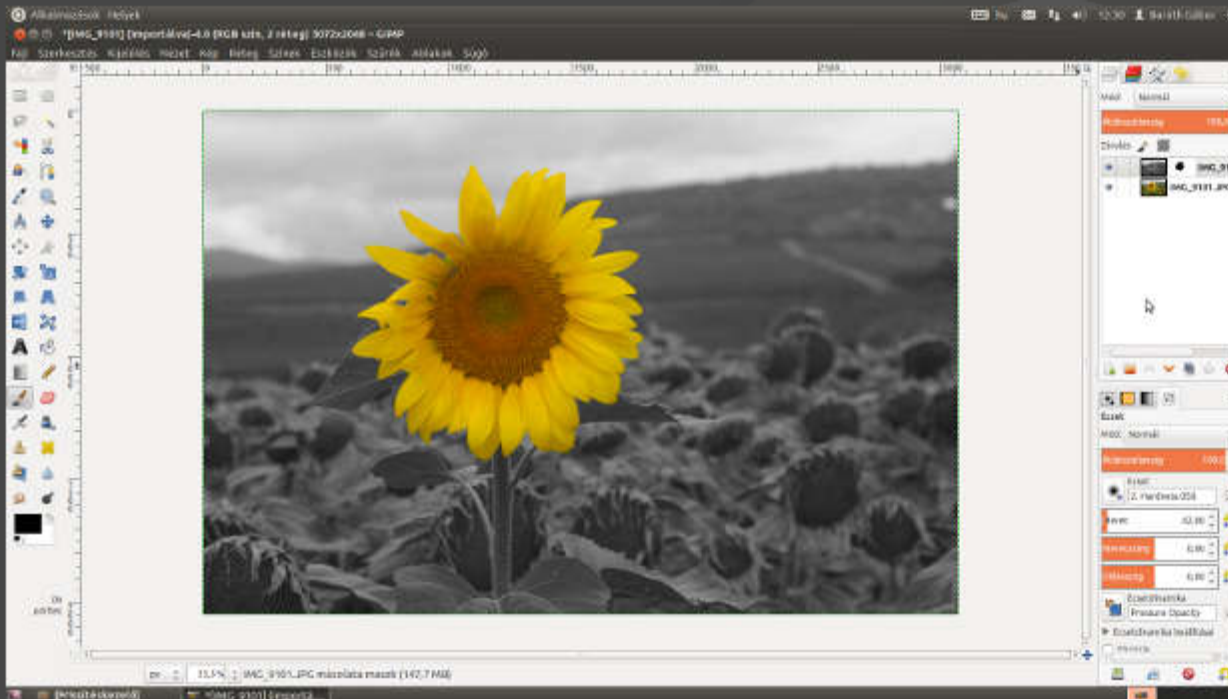
```
; Typesetting chessboard by notation in LibreOffice 4 (or 5 for font embedding)  
; Merida Unicode Chess font + instructions for installation:  
; http://mip.noekeon.org/HTMLTTChess/chess\_merida\_unicode.html  
; Click on the Start icon of (View » Toolbars ») Logo toolbar.  
; Export as PDF in Writer or convert it to curve in Draw to  
; avoid font dependency (PDF format keeps hinting, too).
```

Search:

69%

CASE STUDY: Big documents

- Document: 448 MB (GIMP textbook by FSF.hu Foundation, Hungary)
- Stored only in the cloud → fast access



CASE STUDY: DTP

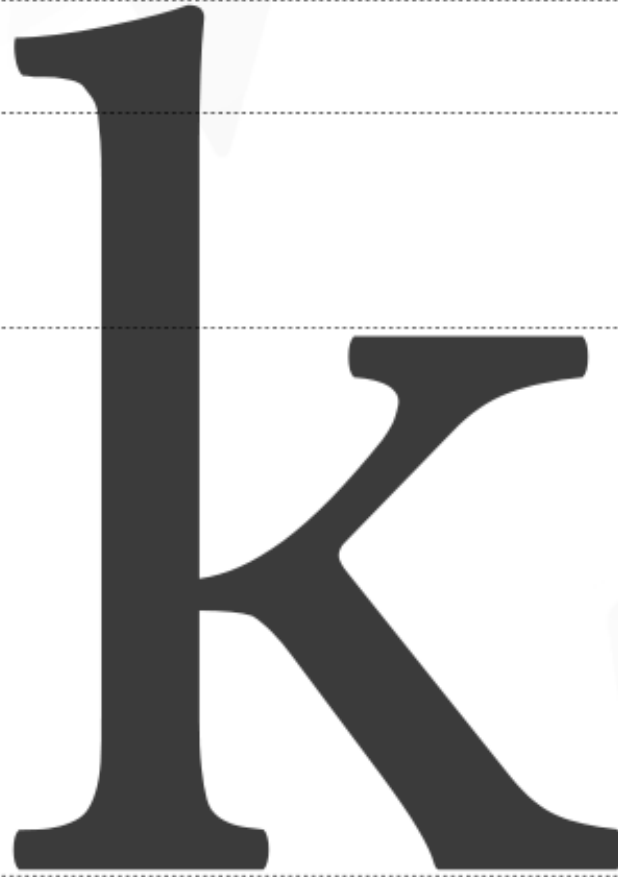
- Font features (Graphite)
- Linux Libertine G, Linux Biolinum G
- http://numbertext.org/linux/LibOConf2011_DTP.pdf
- PDF export
 - GIMP textbook: different quality/size
 - Links on every page headers to TOC (for PDF viewer of browsers)

Optical weighting II

- Comparison of the letter *k* of these three weights

A large, bold, black letter 'k' in a display font weight. The letter is tall and has a thick, solid vertical stem. The bowl of the letter is wide and shallow, with a thick, curved arm that extends to the right and then curves downwards. The bottom of the letter is wide and flat.

Display

A medium-sized, black letter 'k' in a normal font weight. The letter is tall and has a thick, solid vertical stem. The bowl of the letter is wide and shallow, with a thick, curved arm that extends to the right and then curves downwards. The bottom of the letter is wide and flat.

Normal

A small, black letter 'k' in a caption font weight. The letter is tall and has a thick, solid vertical stem. The bowl of the letter is wide and shallow, with a thick, curved arm that extends to the right and then curves downwards. The bottom of the letter is wide and flat.

Caption (superior)

PDF export (optimized for web)

gimp_konyv_kicsi.pdf - Mozilla Firefox

gimp_konyv_kicsi.pdf x +

gimp.hu/konyv/gimp_konyv_kicsi.pdf

Keresés

Oldal: 65 összesen: 266

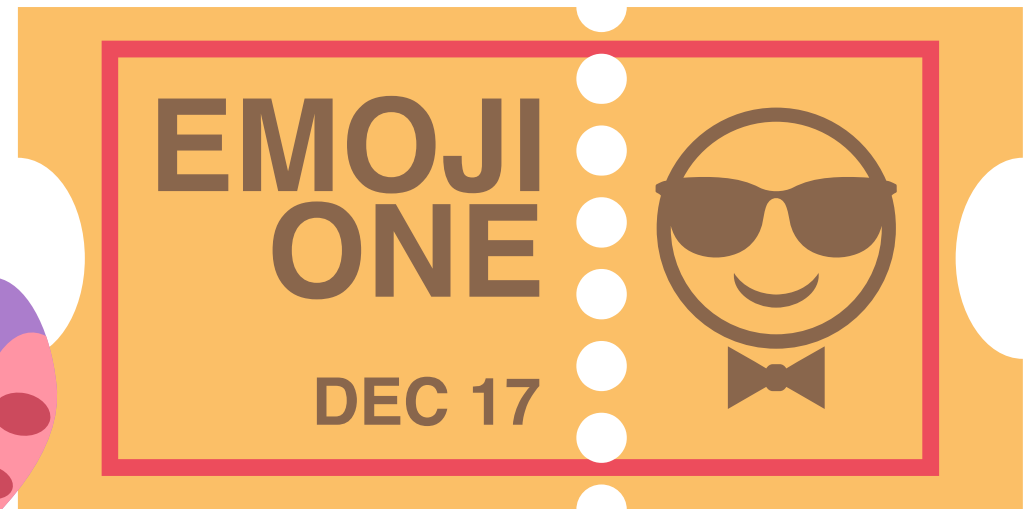
130%

GIMP KÖNYV 3.3. NYERS FOTÓK KIDOLGOZÁSA 65

4 Most állítsuk be a helyes expozíciót! Érdemes egy esélyt adni az UFRaw-nak, hogy próbálja meg kitalálni, mekkora expozíciókompensációra van szükség. Nyomd meg tehát a felső gombsor

CASE STUDY: SVG vector graphics

- Wikipedia/Wikimedia Commons
- Emoji One





Lively Alphabet
an open source coloring book



Aardvark
[árdvárk] földimalac



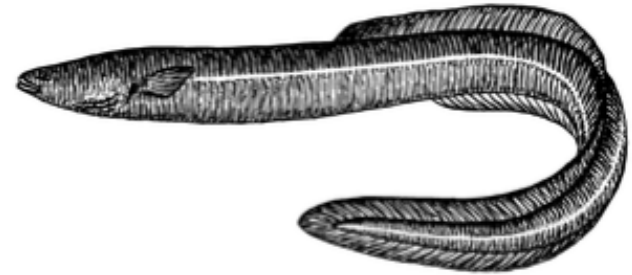
Bobcat
[bábket ♣] vörös hiúz



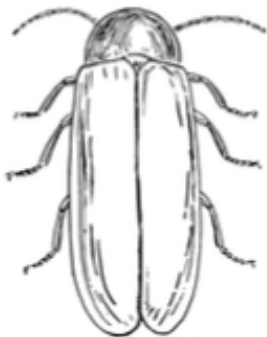
Crocodile
[kraködáj] krokodil



Dodo
[dōudōu] dodó



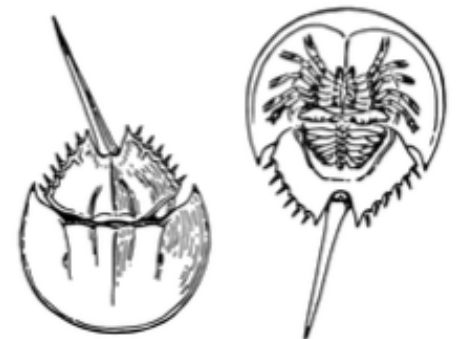
Eel
[íl ♣] angolna



Firefly
[fájörfláj] szentjánosbogár



Guinea pig
[gini pig] tengerimalac



Horseshoe crab
[hósz-sú kreb ♣] atlanti törfarkú rák

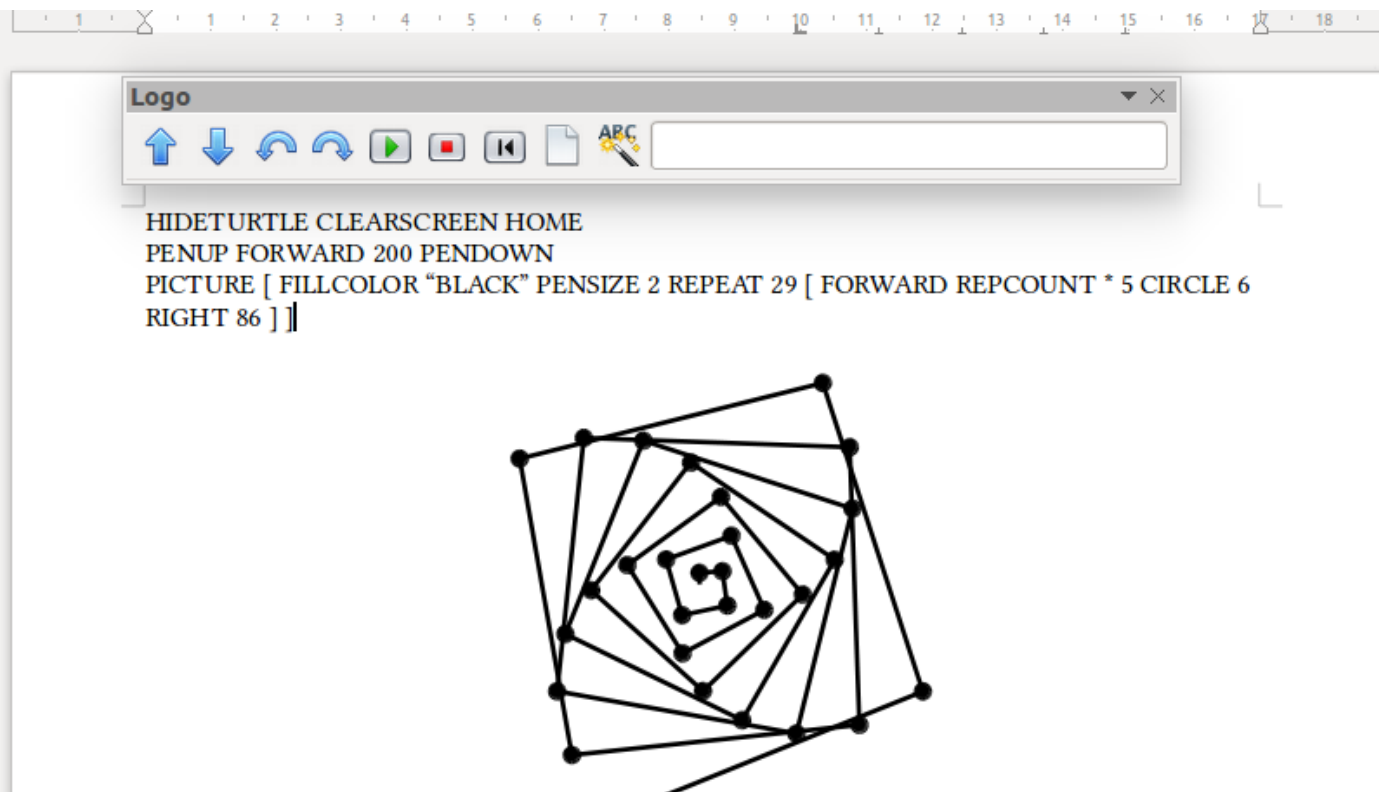
CASE STUDY: FORMS

- Form standards with high quality page layout
- PDF 2 (draft)
- OpenDocument (including XForms), supported by LibreOffice



CASE STUDY: LIBRELOGO

- Vector drawing language in Writer
- <http://www.librelogo.org>



Body art



Thanks for your attention!

