

# Editable nested fields in Writer

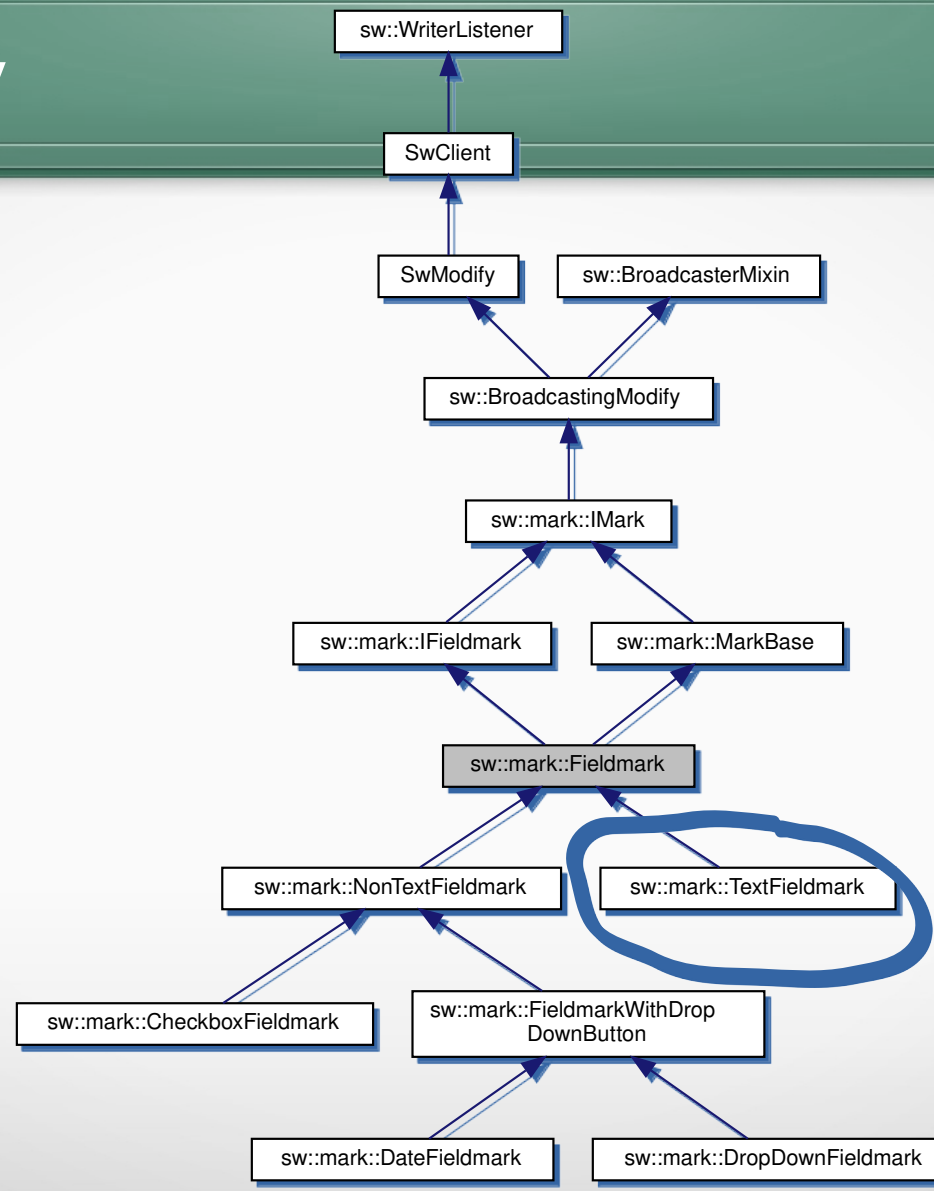


Michael Stahl  
allotropia software GmbH  
2021-02-07

- Writer fields
  - a magic character inside a paragraph in the document model
  - simple mechanism to generate a bit of text
- Word fields
  - field instruction + field result
  - both user editable rich text
  - used for lots of things, e.g., indexes

- added to OOo >10 years ago
- representation of Word fields in Writer model, as a kind of bookmark
- Text fieldmark:
  - 2 dummy characters, with instruction as string property
    - can't actually represent Word fields

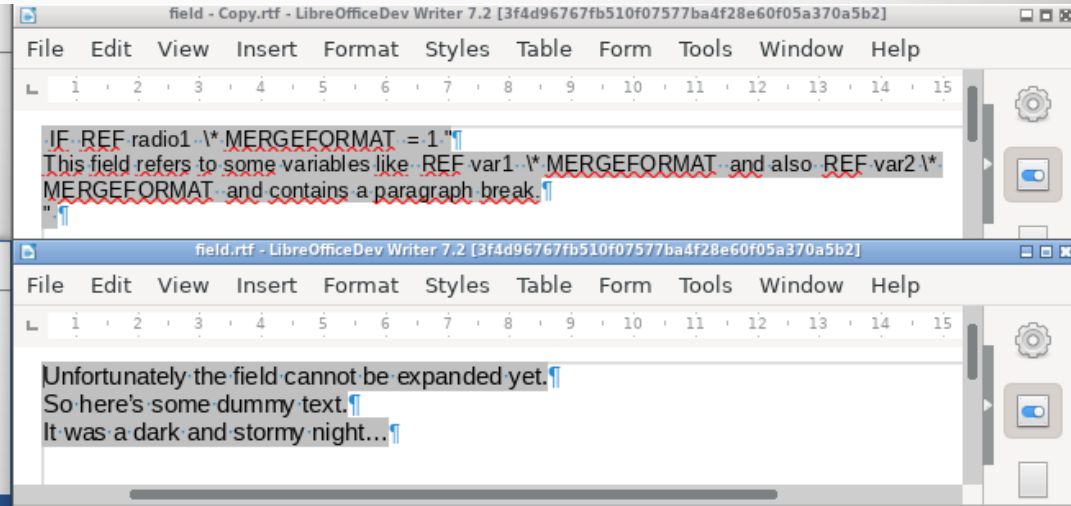
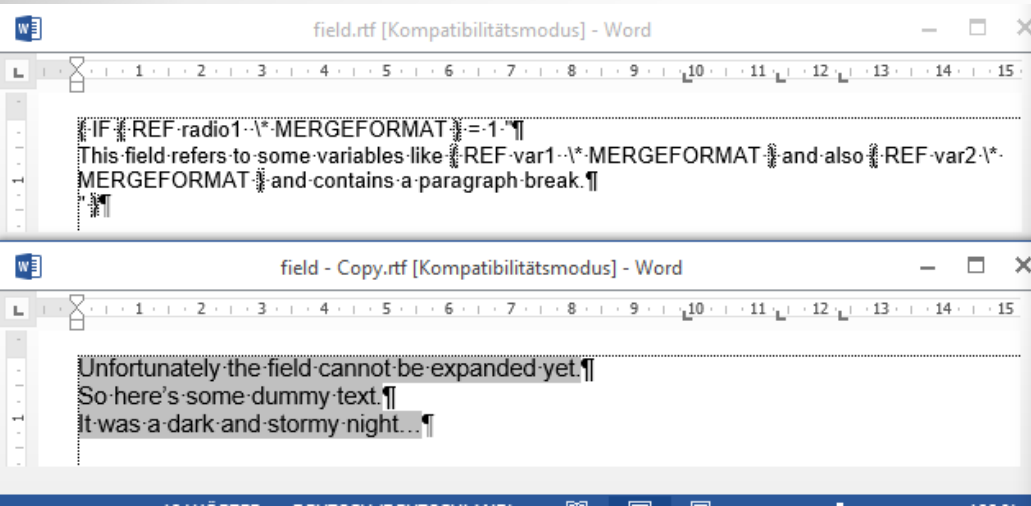
# Class hierarchy



- added 3rd dummy character CH\_TXT\_ATR\_FIELDSEP
  - can now nest fields in field instruction
- keep fieldmarks consistent when editing (overlapping selections)
- working Undo/Redo
- removed some defensive programming, deployed some asserts
  - lots of bugs fixed
    - [control characters inserted as text]
- `Office::Common::Filter::Microsoft::Import::ForceImportWWFieldsAsGenericFields`: suppress converting Word fields to Writer fields in RTF/DOCX import

- View ► Field Names now hides the command or the result
  - In LibreOffice 7.1

# Example nested field



- expand the field instruction into a new result (far future...)



# Thanks for your attention

