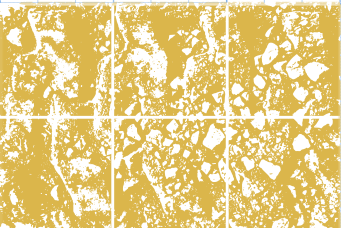


Longer-term support releases for Buildroot

Titouan Christophe

Thomas Perale

Mind oss



[Its.buildroot.org](https://its.buildroot.org)

security.buildroot.org

Buildroot ?

1 *Configure*

2 *Customize*

3 *Build*

- Making embedded linux as easy as •

```
>make defconfig (1)
```

```
>make menuconfig (2)
```

```
>make (3)
```

Buildroot release workflow

Write patch

2  Send

3 Review on the mailing list

Applied to master branch



release workflow

```
1 year support
(lts)
```

```
<year>.02  
Release
```

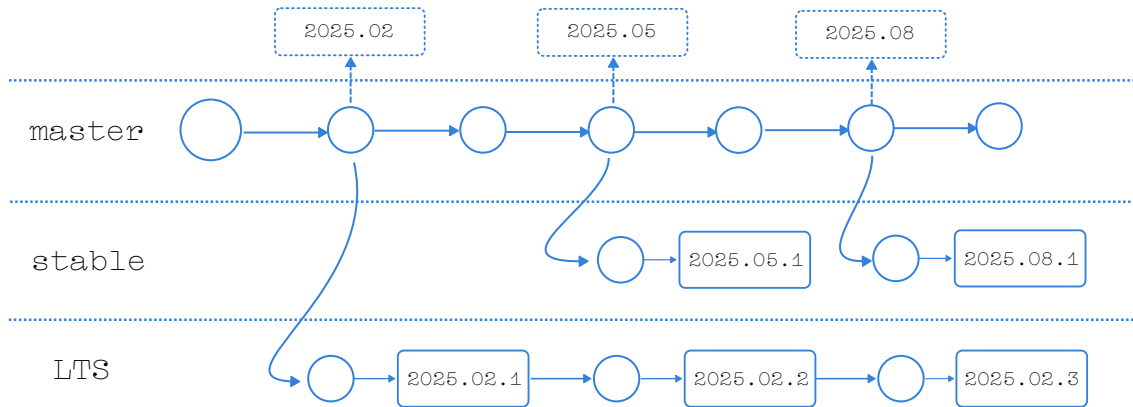
<year>.05
Release

3 month support
(stable)

<year>.08
Release

<year>.11
Release

Buildroot release workflow



Buildroot version

2025.02.x *is now*

supported for

3 years

LTS Objectives

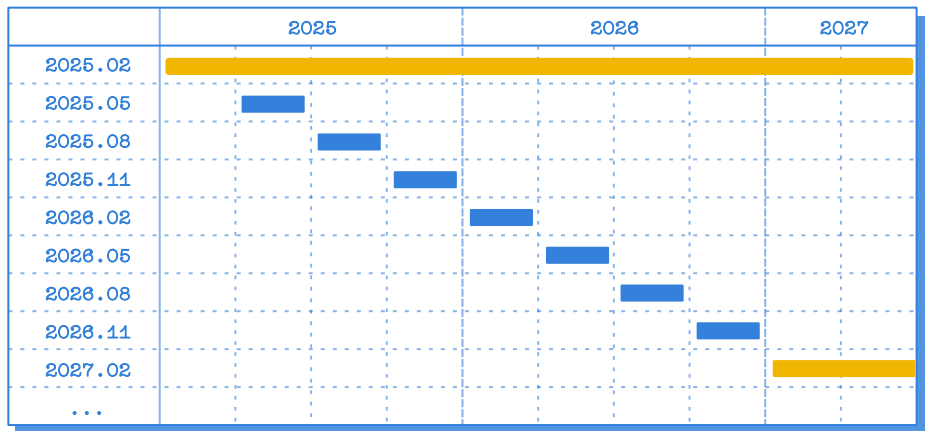
1 3-year LTS
LTS every
2 years

2 Vulnerability
tracking
& reporting

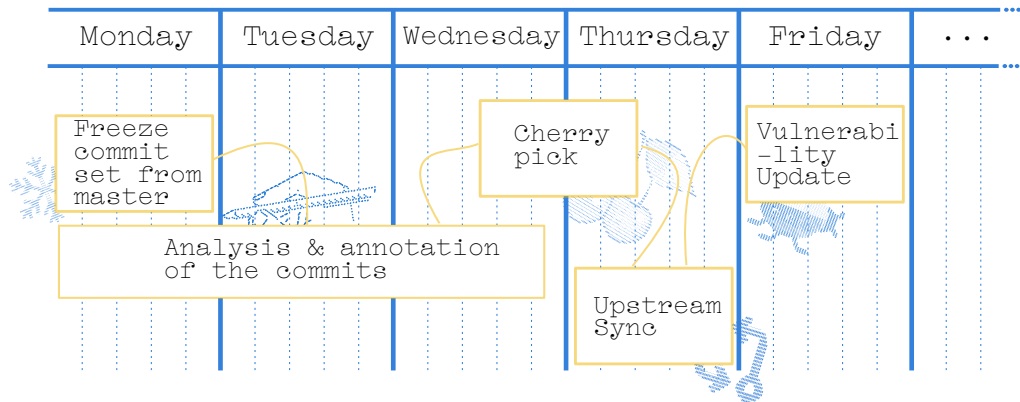
3 Sponsored
LTS stewards

4 Dedicated
backport

New Release Cycle

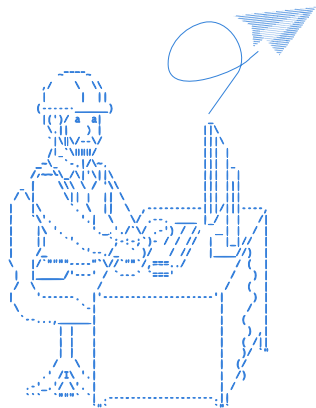


LTS Organization



Contributing

Security update



- Mention security bump & vulnerabilities

- From: Titouan Christophe via buildroot <buildroot@buildroot.org>
To: buildroot@buildroot.org
Subject: [Buildroot] [PATCH] package/redis: **security bump** to v8.2.3

- See the release notes: <https://github.com/redis/redis/releases/tag/8.2.3>

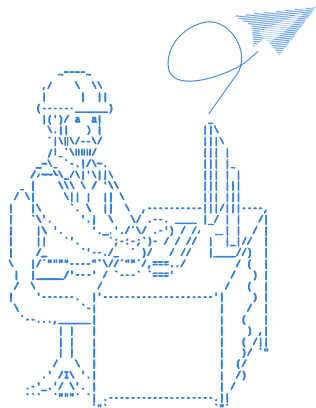
- This fixes the following vulnerability:

- - **CVE-2025-62507:**

- Redis is an open source, in-memory database that persists on disk. versions 8.2.0 and above, a user can run the XACKDEL command with multiple ID's and trigger a stack buffer overflow, which may potentially lead to remote code execution. This issue is fixed in version 8.2.3. To workaround this issue without patching the redis-server executable is to prevent users from executing XACKDEL operation. This can be done using ACL to restrict XACKDEL command. <https://www.cve.org/CVERecord?id=CVE-2025-62507>

Contributing

Reference fixes

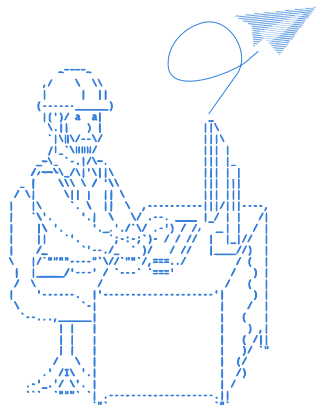


Reference fixes in your commit message

- From: Thomas Perale via buildroot <buildroot@buildroot.org>
- To: buildroot@buildroot.org
- Subject: [Buildroot] [2025.02.x, PATCH] package/sysprof: remove 'debuginfod'
- Commit [1] was erroneously picked because it mentioned commit [2], which is present in the LTS branch.
- In fact, the 'debuginfod' option was introduced in the sysprof package in version 48.0 (see [3] and Buildroot commit [4]), which was not picked in the LTS branch.
- This patch reverts commit [1] and removes the option it introduced, which does not exist in sysprof 47.2.
- [1] 26fd8eb217 package/sysprof: disable debuginfod support
- [2] 52c5c6050c package/elfutils: bump to version 0.181
- [3] <https://gitlab.gnome.org/GNOME/sysprof/-/commit/d2471d4bf571c3a>
- [4] e743759a52 package/sysprof: bump to version 48.0
- Fixes: <https://gitlab.com/buildroot.org/buildroot/-/issues/152>

Contributing

Split commits



Split in multiple commits security/build fixes
& package bump

From: Titouan Christophe via buildroot <buildroot@buildroot.org>
To: buildroot@buildroot.org
Subject: [Buildroot] [PATCH 1/2] package/xerces: **security** bump to v3.2.5

From: Titouan Christophe via buildroot <buildroot@buildroot.org>
To: buildroot@buildroot.org
Subject: [Buildroot] [PATCH 2/2] package/xerces: **bump** to v3.3.0

See the release notes:
<https://issues.apache.org/jira/secure/ReleaseNote.jspa?version=...>

CycloneDX SBoM Support

Since 2025.02

Generate a CycloneDX SBOM



```
> make show-info | utils/generate-cyclonedx
```

Vulnerability Analysis Support

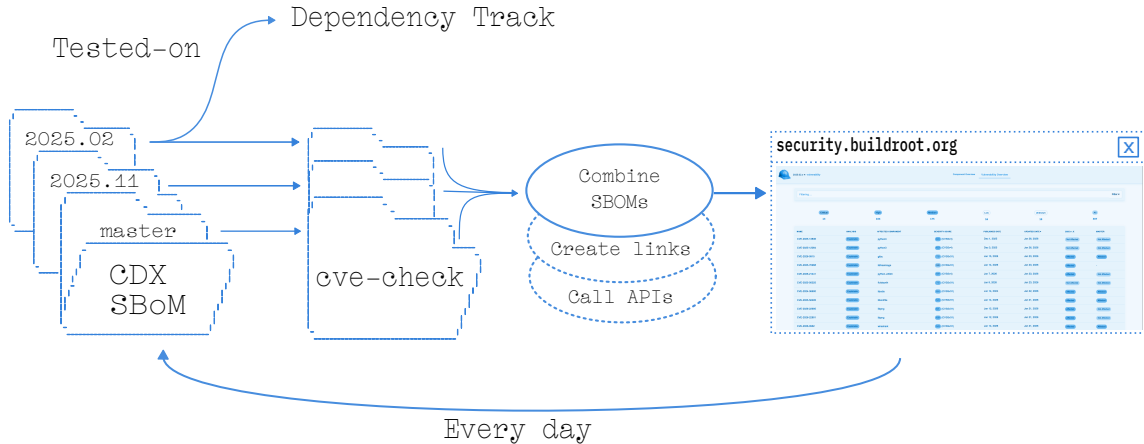
Since 2025.02.9

Vulnerability analysis



```
> cat <sbom>.json | support/script/cve-check
```

Security monitoring



Why Sponsor ?

1 Long-term sustainability

2 Contact with LTS stewards

3 Personalized security report

4 Recognition of your sponsorship

After one year

3916

Reviewed
commits

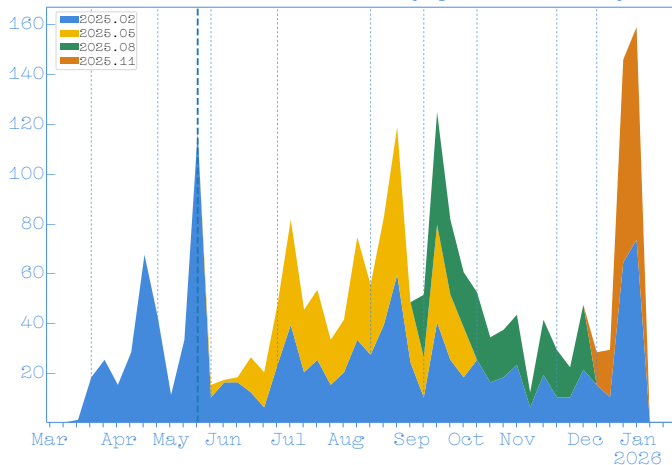
1314

Cherry picked
commits

330

Fixed
vulnerabilities

Number of commits cherry-picked (weekly)



Thanks to our sponsors



mind.be



evs.com



openhomefoundation.org



sense.com

Its.buildroot.org

security.buildroot.org

Credits

- Compagnon - <https://velvetyne.fr/fonts/compagnon/>
- Terminal Grotesque - <https://velvetyne.fr/fonts/terminal-grotesque/>
- FOSDEM Logo - https://upload.wikimedia.org/wikipedia/commons/8/8a/FOSDEM_logo.svg